

**DNP**

**Advanced Network & Security Features**

# **DNP CX-330 Card Printer**



**NEW**

September 2007  
Dai Nippon Printing Co., Ltd.





# Product Concept

**CX-330 is a network & security enhanced version of CX-320.**

**CX-320 + Network + Security + More = CX-330**

**Since its launch in early 2006, CX-320 has been enjoying very strong supports from partners and users around the world.**

**DNP is very pleased to respond to this by offering further improved product to our partners.**

**CX-330 comes up with many sophisticated new features which go beyond existing industry standard to catch up with ever increasing demand from today's sophisticated network infrastructure.**



## **Continuity between CX-330 and CX-320**

- 1. Our partners are able to switch from CX-320 to CX-330 without any hassle.**
- 2. Most consumables, optional equipments for CX-320 are compatible with CX-330.**
- 3. You can run CX-330 with the same computer and software used to run CX-320 in the most cases because CX-330 can do exactly the same jobs CX-320 does.**
- 4. It is assumed that application software need to be modified accordingly to perform a certain new feature of CX-330. DNP is pleased to provide necessary technical support to software partners and developers.**



# Network Feature - Dual Interface

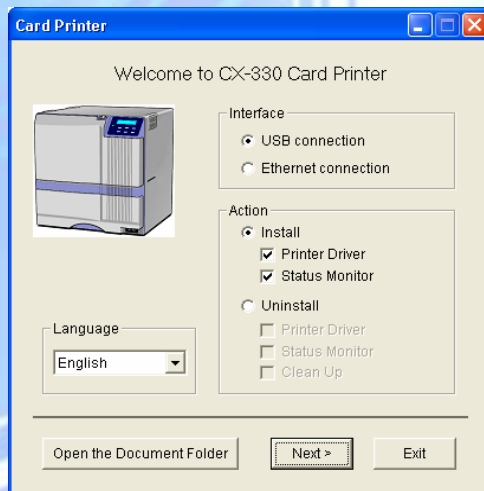
Same as  
CX-320

**High Speed  
USB 2.0**

New with  
CX-330

**Ethernet  
100Base-TX  
10Base-T**

Since CX-330 has printer server inside,  
no device server is needed.

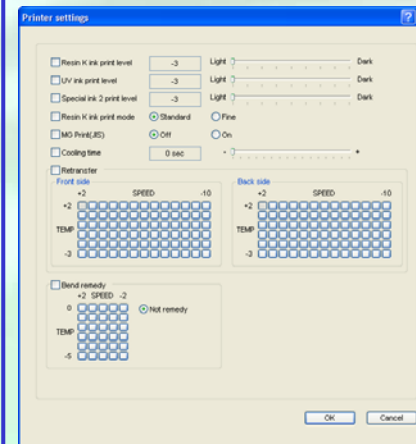
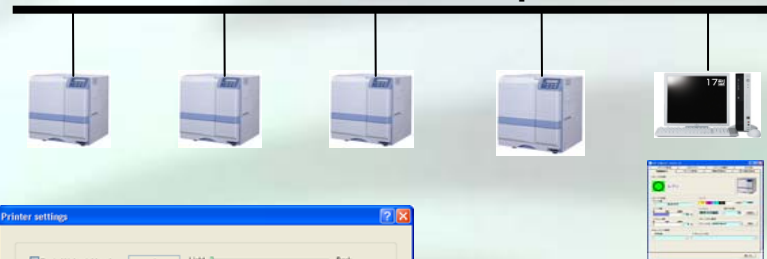


## Ethernet Connection

**Multiple operators share one printer**



**It is possible to choose any printer  
in the network to print.**



**\*Status Monitor Program  
(SMP) allows you to  
change each printer's  
setting from your computer.**

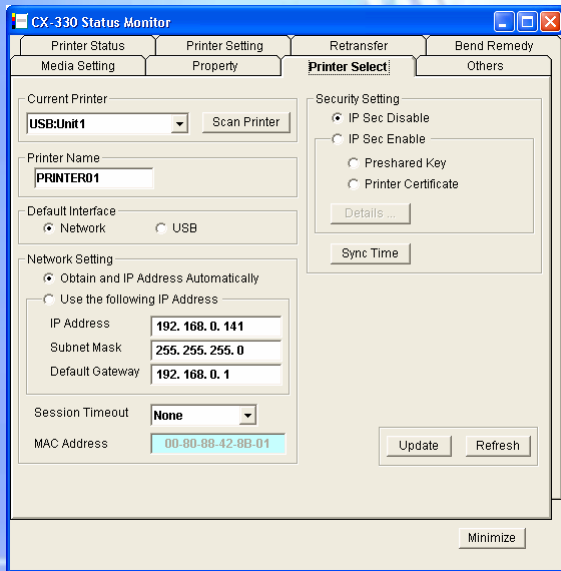




# Security Feature No.1 - IPSec Protocol

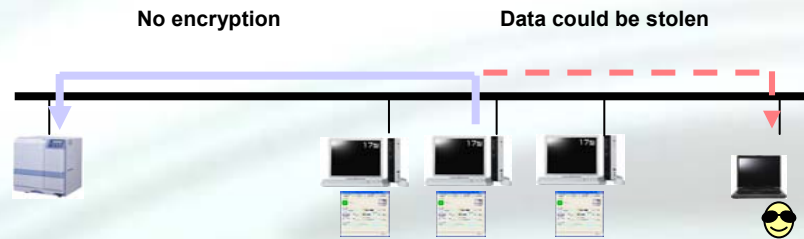
## IPSec Protocol equipped(IPv4)

A hardware to encrypt/decrypt print data sent through network is equipped inside CX-330.

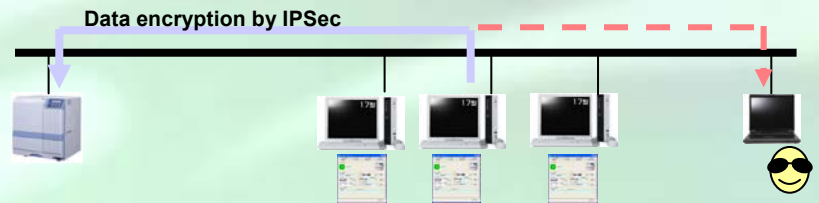


**IPSec**  
(Security Architecture for Internet Protocol)

### No Data Encryption



### High Speed Data Encryption/Decryption

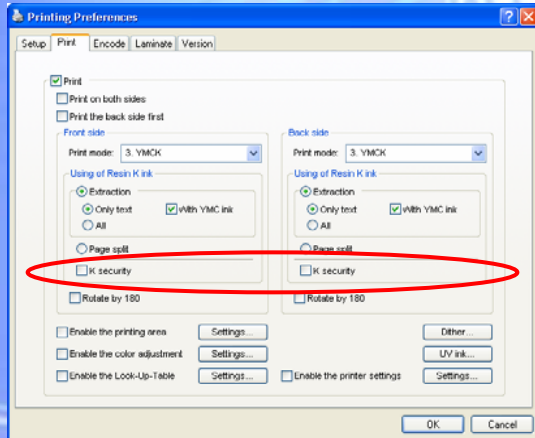




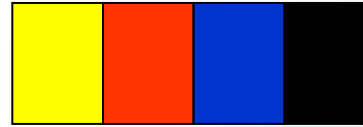
# Security Feature No.2 – Security Erase Function

## Protection against Personal Information Leak

**Personal information (print data) left on the used ink ribbon can be erased using this function.**



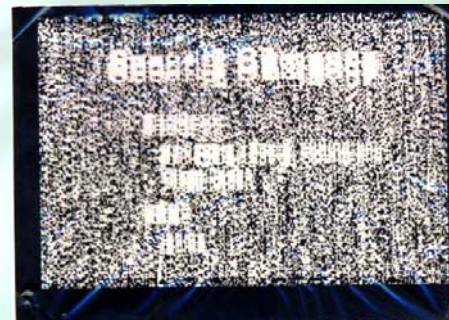
This operation is done by driver and printer.  
So it is not necessary to modify your software.



K Security Erase works With YMCK ribbon.



Information left on the K panel of used ink ribbon.

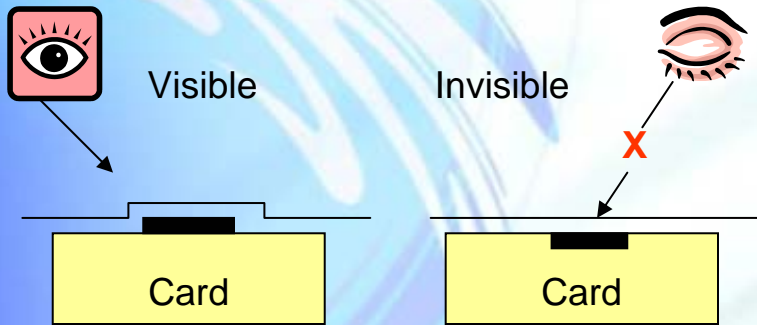


After Security Erase operation



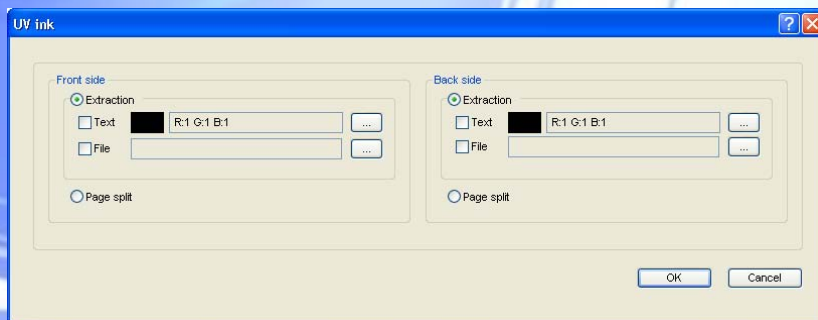
# Security Feature No.3 – Dye Diffusion UV Printing

## Invisible & Photographic Security UV printing



Current UV Ink  
2 step graduation

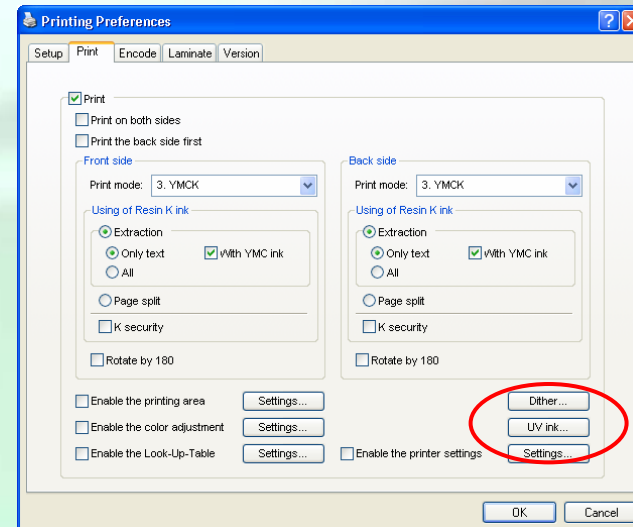
Dye Diffusion UV Ink  
256 step graduation



Dye Diffusion  
UV Ink Ribbon



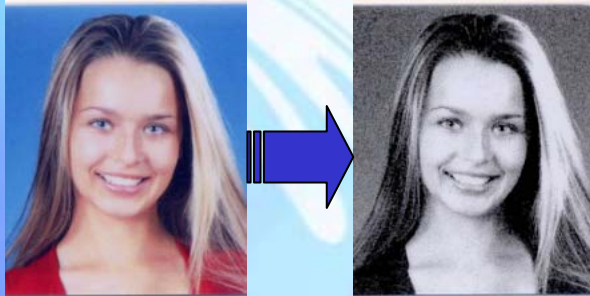
**\* Dye diffusion UV printing function and Ink ribbon focus on specific high security ID project. The UV ink ribbon is made to order product.**





# Printer Driver – Dither Printing Function

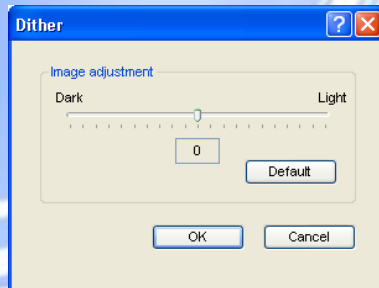
## Dither Print Conversion:



Original Color

K resin mono

It is possible to convert color data into monochrome data by the printer driver . Superior reproduction at middle range tone.



Special data conversion method was taken to achieve the best possible dither printing by K resin ink panel.



CX-330

Others







# Dual Side Laminate Option

## CF-AT10 Flip Unit

Special unit connected with CL-500D to do dual side lamination.

CF-AT10  
Flip Unit



CL-500D  
Laminator



Minimum hardware cost  
Alternate patch available  
for project.

Different type of laminate  
media for front & back.

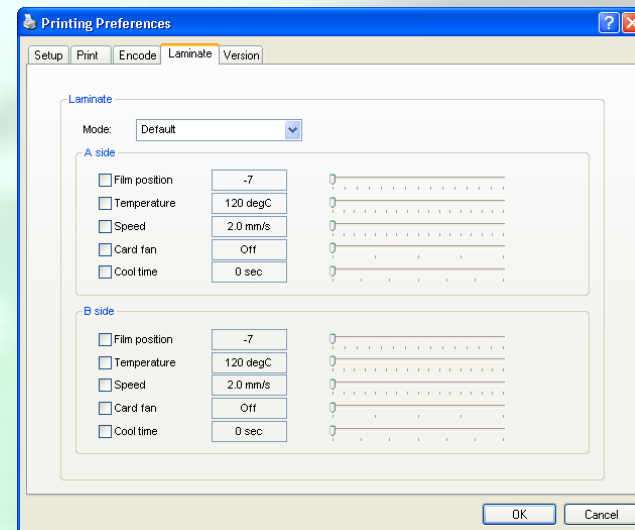
### Lamination Media line Up

- \* 1.0/0.6 mil patch
- \* 1.0/0.6 mil patch with chip cutout
- \* Generic Holographic Overlay
- \* Custom made hologram
- \* Custom alternate patch



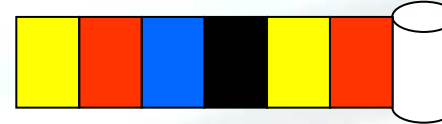
It is possible to calibrate laminate setting  
for each laminator configured differently  
in network.

This function is provided by the printer  
driver through Status Monitor Program.





# Various Configuration and Optional Equipments



YMCK



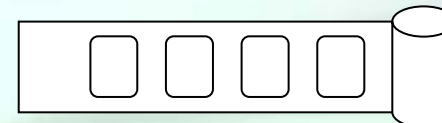
YMCK+K



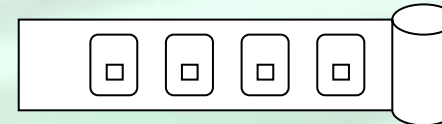
YMCKUV



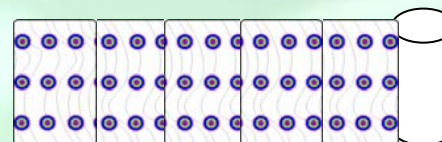
Re-transfer Film



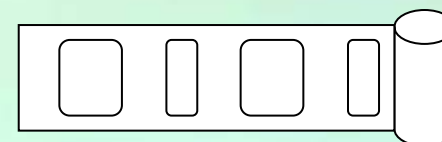
1.0/0.6  
Clear Patch



1.0/0.6 mil Patch  
Smart Chip Cut



DNP Generic  
Holo Overlay



Alternate Patch  
(custom made)



# Contact

**Thank you for your kind attention.  
Should you have any further questions, please feel free to contact;**

**SecureTech Peripherals, Inc.  
Web: [www.stpi.us](http://www.stpi.us)  
Tel: 877-219-0044**

**DNP**  
Dai Nippon Printing Co.,Ltd.